

---

---

**Identification cards — Integrated  
circuit cards —**

**Part 4:  
Organization, security and commands  
for interchange**

**AMENDMENT 2: Waiting time  
management**

*Cartes d'identification — Cartes à circuit intégré —*

*Partie 4: Organisation, sécurité et commandes pour les échanges*

*AMENDEMENT 2: Gestion du temps d'attente*



IECNORM.COM : Click to view the full PDF of ISO/IEC 7816-4:2013/AMD2:2018



**COPYRIGHT PROTECTED DOCUMENT**

© ISO/IEC 2018

All rights reserved. Unless otherwise specified, or required in the context of its implementation, no part of this publication may be reproduced or utilized otherwise in any form or by any means, electronic or mechanical, including photocopying, or posting on the internet or an intranet, without prior written permission. Permission can be requested from either ISO at the address below or ISO's member body in the country of the requester.

ISO copyright office  
CP 401 • Ch. de Blandonnet 8  
CH-1214 Vernier, Geneva  
Phone: +41 22 749 01 11  
Fax: +41 22 749 09 47  
Email: [copyright@iso.org](mailto:copyright@iso.org)  
Website: [www.iso.org](http://www.iso.org)

Published in Switzerland

## Foreword

ISO (the International Organization for Standardization) and IEC (the International Electrotechnical Commission) form the specialized system for worldwide standardization. National bodies that are members of ISO or IEC participate in the development of International Standards through technical committees established by the respective organization to deal with particular fields of technical activity. ISO and IEC technical committees collaborate in fields of mutual interest. Other international organizations, governmental and non-governmental, in liaison with ISO and IEC, also take part in the work. In the field of information technology, ISO and IEC have established a joint technical committee, ISO/IEC JTC 1.

The procedures used to develop this document and those intended for its further maintenance are described in the ISO/IEC Directives, Part 1. In particular, the different approval criteria needed for the different types of ISO documents should be noted. This document was drafted in accordance with the editorial rules of the ISO/IEC Directives, Part 2 (see [www.iso.org/directives](http://www.iso.org/directives)).

Attention is drawn to the possibility that some of the elements of this document may be the subject of patent rights. ISO shall not be held responsible for identifying any or all such patent rights. Details of any patent rights identified during the development of the document will be in the Introduction and/or on the ISO list of patent declarations received (see [www.iso.org/patents](http://www.iso.org/patents)).

Any trade name used in this document is information given for the convenience of users and does not constitute an endorsement.

For an explanation of the voluntary nature of standards, the meaning of ISO specific terms and expressions related to conformity assessment, as well as information about ISO's adherence to the World Trade Organization (WTO) principles in the Technical Barriers to Trade (TBT) see [www.iso.org/iso/foreword.html](http://www.iso.org/iso/foreword.html).

This document was prepared by Technical Committee ISO/JTC1, *Information technology*, Subcommittee SC 17, *Cards and security devices for personal identification*.

Any feedback or questions on this document should be directed to the user's national standards body. A complete listing of these bodies can be found at [www.iso.org/members.html](http://www.iso.org/members.html).

IECNORM.COM : Click to view the full PDF of ISO/IEC 7816-4:2013/AMD2:2018

# Identification cards — Integrated circuit cards —

## Part 4:

## Organization, security and commands for interchange

### AMENDMENT 2: Waiting time management

Page 102, 12.1

Add the following sentence to the end of the first paragraph:

The waiting time management provides the information regarding application waiting time to the outside world (see 12.1.3).

Page 106

Add the following new subclause after 12.1.2:

#### 12.1.3 Waiting time management

##### 12.1.3.1 General

The waiting time management service provides the information regarding application waiting time depending on respective cases, e.g. each command, each operation, and each amount of data. By using this information, an application on an IFD detects an unresponsive ICC without any negotiation, as an alternative to using a single waiting time defined on a transmission protocol (See ISO/IEC 7816-3 and ISO/IEC 14443-4).

The application waiting time is the maximum delay between the leading edge of a character transmitted by an ICC and the leading edge of the previous character transmitted by an IFD.

This information is available under application waiting time management information DO'7F75' in the EF.ATR/INFO and/or in the FCI of any application DF. Table Amd.2-2 indicates four formats for this information.

The rationale for handling the waiting time defined in ISO/IEC 7816-3 in correlation with the execution time information by an application on an IFD is out of the scope of this document.

**Table — Amd.2-2 — Application waiting time data objects under application waiting time management information DO'7F75'**

Tag	Length	Value
'81'	Var.	Application waiting time management information in compact format
'A1'	Var.	Application waiting time management data elements in expanded format
'82'	Var.	Application waiting time management information in proprietary format
'A2'	Var.	Application waiting time management data elements in proprietary format

##### 12.1.3.2 Compact format

In compact format, an application waiting time management information consists of a command indicator field followed by a concatenation of 2-byte application waiting time management factors. Each bit of bits b7 to b1 indicates whether the application waiting time management factor for each command

is present, i.e. a bit as 1 means present and a bit as 0 means absent. Table Amd.2-3 shows the first byte of command indicator. Subsequent bytes of command indicator are RFU.

An application waiting time management factor consists of 1-byte base time and 1-byte unit time. The maximum application waiting time is derived from base time plus result of multiplying unit time by data length of command processing (see arithmetic expression below). A base time is the part of each command execution time independent from data length of command processing. A unit time is 1 byte data processing time for each command, e.g. reading 1 byte data, updating 1 byte data, or verifying 1 byte data.

$$AWT_{max} = T_b + (T_u \times L)$$

where

$AWT_{max}$  is maximum application waiting time [ms];

$T_b$  is base time [ms];

$T_u$  is unit time [ms/B];

$L$  is data length [B].

**Table — Amd.2-3 — Coding of the first byte of command indicator**

b8	b7	b6	b5	b4	b3	b2	b1	Meaning
x	—	—	—	—	—	—	—	Presence of next command indicator
0	—	—	—	—	—	—	—	Last command indicator byte
1	—	—	—	—	—	—	—	Next command indicator byte available
—	x	x	x	x	x	x	x	Presence of application waiting time management factor for each command
—	1	—	—	—	—	—	—	READ BINARY
—	—	1	—	—	—	—	—	UPDATE BINARY
—	—	—	1	—	—	—	—	READ RECORD (S)
—	—	—	—	1	—	—	—	UPDATE RECORD
—	—	—	—	—	x	x	x	RFU

### 12.1.3.3 Expanded format

In expanded format, an application waiting time management information consists of a concatenation of a command header description DO'81' followed by an application waiting time management factor DO'A0'. A value field of a command header description DO'81' is composed of a mandatory command header description byte followed by an optional CLA byte, INS byte, P1 byte and P2 byte depending on the value of the command header description byte. Table Amd.2-4 shows the command header description byte (the first byte of the value field of DO'81').

**Table — Amd.2-4 — Coding of command header description byte**

b8	b7	b6	b5	b4	b3	b2	b1	Meaning
0	0	0	0	x	x	x	x	<b>The command header description includes</b>
0	0	0	0	1	—	—	—	(CLA), i.e. the value of CLA
0	0	0	0	—	1	—	—	(INS), i.e. the value of INS
0	0	0	0	—	—	1	—	(P1), i.e. the value of P1
0	0	0	0	—	—	—	1	(P2), i.e. the value of P2
— Any other value is RFU.								
— The value of CLA shall encode zero as the number for logical channel with the meaning that the description is independent from logical channels.								

Table Amd.2-5 lists application waiting time management factor DOs with context-specific class tag. Each application waiting time management factor is associated to the specific arithmetic expression. Two application waiting management factor DOs associated to one arithmetic expression (see 12.1.3.1) are provided.

**Table — Amd.2-5 — Waiting time management factor DOs**

Tag	Length	Value
'80'	Var.	Base time
'81'	Var.	Unit time

Page 113, Table 123

Replace the last row of this table with the following:

	—	—	1	—	—	—	—	—	Application waiting time management information
	—	x	—	—	—	—	—	—	0 (any other value is RFU)

Page 148, Annex H

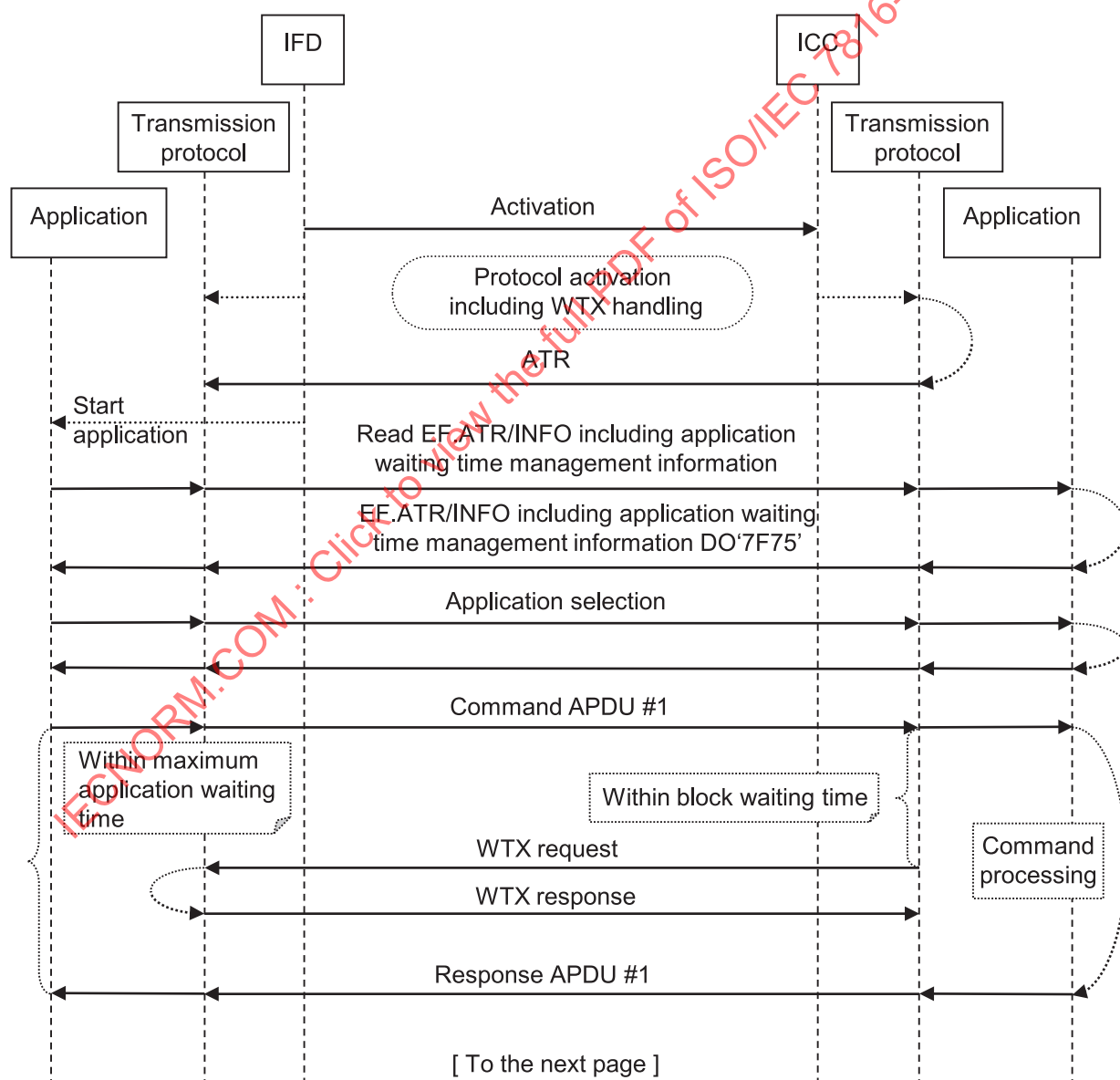
Add the following informative annex after Annex H:

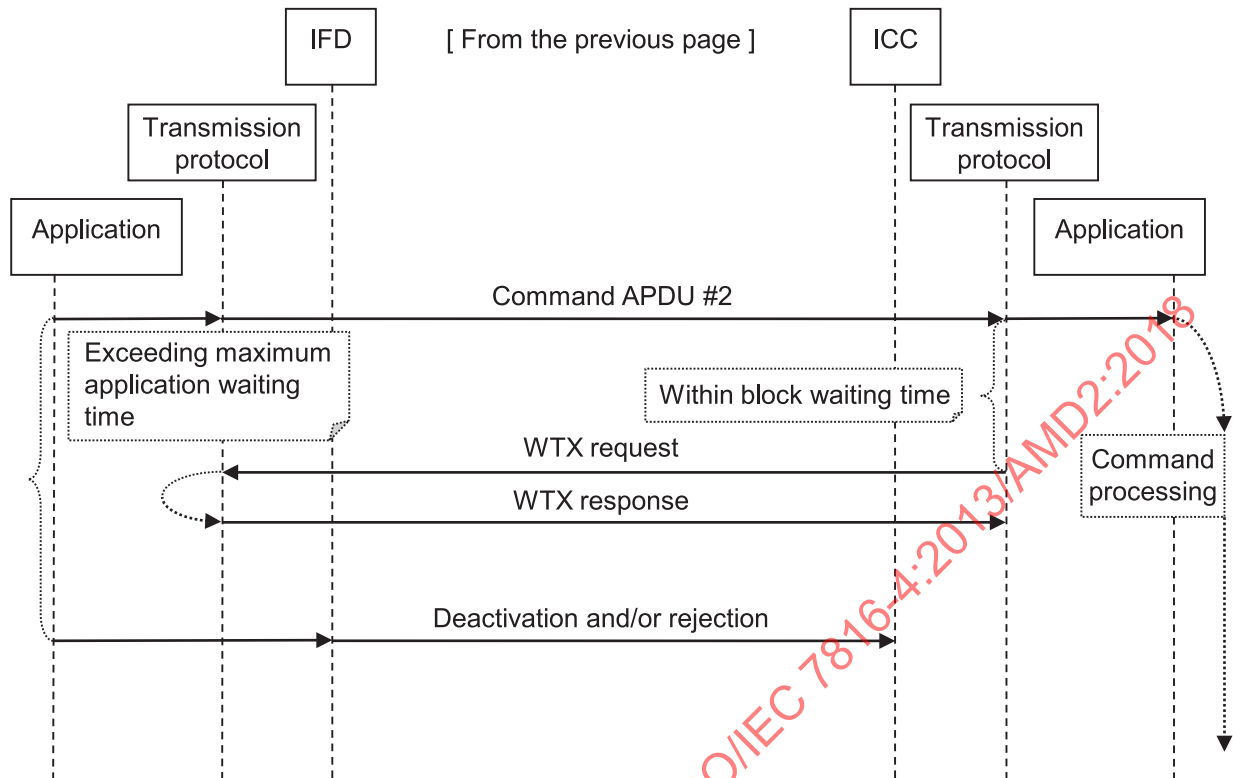
## Annex I (informative)

### Use case of WTX (waiting time extension) procedure and application waiting time procedure

#### I.1 Example in case of block waiting time shorter than maximum application waiting time

Figure I.1 illustrates an example of WTX (waiting time extension) procedure for  $T = 1$  protocol defined in ISO/IEC 7816-3 and application waiting time procedure defined in 12.1.3. In case of this example, the block waiting time used for WTX is shorter than the maximum application waiting time used for waiting time management. The application waiting time management information is stored in EF.ATR/INFO.





**Figure I.1 — Example of WTX procedure and application waiting time procedure**

In Figure I.1 command APDU #1 and #2 are sent from IFD to ICC. Command APDU #1 is processed successfully. Command APDU #2 processing is not completed within the maximum application waiting time defined in the application waiting time management information. Then the application on IFD decides to deactivate and/or to reject ICC. The following is detailed sequence in Figure I.1:

- 1) IFD activates ICC, then MF in ICC is selected and ICC responds ATR.
- 2) Both IFD and ICC activate their own protocol.
- 3) IFD starts the application on IFD.
- 4) The application on IFD reads EF.ATR/INFO including application waiting time management information.
- 5) The application on IFD selects the application in ICC, then ICC responds.
- 6) The application on IFD sends command APDU #1, then ICC starts the command processing.
- 7) Before exceeding the block waiting time, ICC requests WTX to IFD.
- 8) IFD accepts WTX, then responds.
- 9) ICC continues the command processing.
- 10) ICC sends response APDU #1 before exceeding the maximum application waiting time.
- 11) The application on IFD sends command APDU #2, then ICC starts the command processing.
- 12) Before exceeding the block waiting time, ICC requests WTX to IFD.
- 13) IFD accepts WTX, then responds.
- 14) ICC continues the command processing.