

SAE Technical Standards Board Rules provide that: "This report is published by SAE to advance the state of technical and engineering sciences. The use of this report is entirely voluntary, and its applicability and suitability for any particular use, including any patent infringement arising therefrom, is the sole responsibility of the user."

SAE reviews each technical report at least every five years at which time it may be revised, reaffirmed, stabilized, or cancelled. SAE invites your written comments and suggestions.

REV.
B

SAE AS24334

FEDERAL SUPPLY CLASS
4730

RATIONALE

AS24334B HAS BEEN REAFFIRMED TO COMPLY WITH THE SAE FIVE-YEAR REVIEW POLICY.

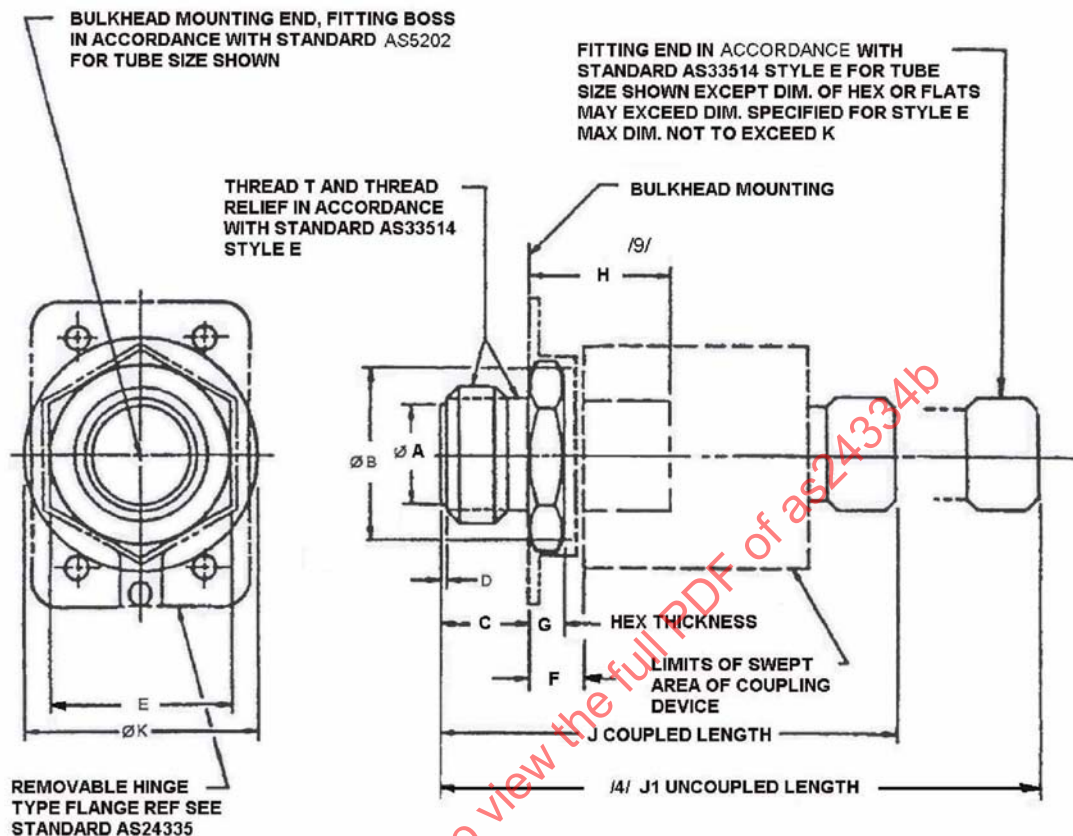
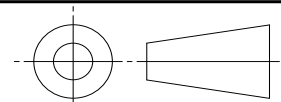


FIGURE 1 - COUPLING ASSEMBLY, FLARELESS, HYDRAULIC

SAE values your input. To provide feedback
on this Technical Report, please visit
<http://www.sae.org/technical/standards/AS24334B>

THIRD ANGLE PROJECTION



CUSTODIAN: G-3/G-3A

PROCUREMENT SPECIFICATION: AS25427

SAE Aerospace
An SAE International Group

AEROSPACE STANDARD

COUPLING ASSEMBLY, HYDRAULIC,
SELF-SEALING, FLARELESS FITTING
TO INTERNAL THREAD BOSS

SAE AS24334
SHEET 1 OF 3

REV.
B

Copyright 2013 SAE International

All rights reserved. No part of this publication may be reproduced, stored in a retrieval system or transmitted, in any form or by any means, electronic, mechanical, photocopying, recording, or otherwise, without the prior written permission of SAE.

TO PLACE A DOCUMENT ORDER: Tel: 877-606-7323 (inside USA and Canada)
Fax: 724-776-0790

Tel: +1 724-776-4970 (outside USA)
Email: CustomerService@sae.org

SAE WEB ADDRESS: <http://www.sae.org>

ISSUED 1998-08 REVISED 2005-04 REAFFIRMED 2013-01

TABLE 1A - DIMENSIONS A-E

DASH NO.	TUBE OD	T-THREAD PER AS8879	A +.015	B MAX	C +.010	D +.010	E
04	.250	.8750-14 UNJF-3A	.750	1.000	.594	.030	1.121-1.128
06	.375	1.0625-12 UNJ-3A	.875	1.250	.594	.030	1.371-1.378
08	.500	1.3125-12 UNJ-3A	1.063	1.500	.594	.030	1.609-1.641
10	.625	1.3125-12 UNJ-3A	1.125	1.594	.594	.030	1.609-1.641
12	.750	1.6250-12 UNJ-3A	1.438	1.750	.906	.062	1.859-1.891
16	1.000	1.8750-12 UNJ-3A	1.687	2.000	.938	.093	2.105-2.145
20	1.250	2.5000-12 UNJ-3A	2.000	2.375	.984	.125	2.730-2.770

TABLE 1B - DIMENSIONS F-K

DASH NO.	F MIN	G +.016 -.000	H MAX	J	J1 MAX /4/	K MAX
04	.355	.250	1.384	3.016	3.110	3.672
06	.355	.250	1.910	3.407	3.501	4.125
08	.355	.250	1.848	3.831	3.925	4.562
10	.355	.250	1.938	4.481	4.575	5.418
12	.438	.312	2.200	4.750	4.844	5.656
16	.438	.312	2.503	5.668	5.762	6.750
20	.500	.312	2.900	5.668	5.810	7.800

NOTES:

1. MATERIAL: SEE PROCUREMENT SPECIFICATION AS25427.
2. FINISH: SEE PROCUREMENT SPECIFICATION AS25427.
3. CONSTRUCTION AND PERFORMANCE: SIZE CODES 04 THROUGH 16 SHALL BE IN ACCORDANCE WITH AS25427, CLASS 3000. SIZE CODE 20 SHALL BE IN ACCORDANCE WITH AS25427, CLASS 600.
- /4/ THE UNCOUPLED LENGTH INDICATES COMPLETE SEPARATION OF COUPLING HALVES, ALLOWING LATERAL DISPLACEMENT WITHOUT INTERFERENCE BETWEEN COUPLING HALVES.
5. THE ASSEMBLY DOES NOT INCLUDE FLANGE STANDARD AS24335.
6. THIS PRODUCT SHALL BE QUALIFIED IN ACCORDANCE WITH PROCUREMENT SPECIFICATION AS25427.
7. IDENTIFICATION: PER PROCUREMENT SPECIFICATION AS25427.
8. SURFACE TEXTURE: SYMBOLS PER ASME Y14.6M; REQUIREMENTS PER ASME B46.1 UNLESS OTHERWISE SPECIFIED, MACHINED SURFACES TO BE 125 μ in Ra.
- /9/ H DIMENSION IS THE MAXIMUM LENGTH OF THE EXPOSED HALF COUPLING WHEN THE MATING HALF IS REMOVED. THIS DIMENSION WAS PREVIOUSLY CALLED "HALF NIPPLE LENGTH"