

SAE-AS28914

ADOPTION NOTICE

SAE-AS28914, "Bearings, Roller, Self-Aligning, Double Row, Airframe, Anti-Friction, Sealed, Type III" was adopted on 02 September 1998, for use by the Department of Defense (DoD). Proposed changes by DoD activities must be submitted to the DoD Adopting Activity: Commander, Naval Air Warfare Center Aircraft Division, Code 414100B120-3, Highway 547, Lakehurst, NJ 08733-5100. DoD activities may obtain copies of this standard from the Standardization Document Order Desk, 700 Robbins Avenue, Building 4D, Philadelphia, PA 19111-5094. The private sector and other government agencies may purchase copies from SAE, 400 Commonwealth Drive, Warrendale, PA 15096-0001.

SAE-AS28914 should be used instead of MS28914D, which was canceled on 02 September 1998.

Custodians:

Army - AT
Navy - AS
Air Force - 99
DLA - GS

Adopting Activity

Navy - AS
(Project 3110-1116)

Review Activities:

Army - AR, AV, MI
Air Force - 84

FSC 3110

DISTRIBUTION STATEMENT A. Approved for public release; distribution is unlimited.

Submitted for recognition as an American National Standard

FEDERAL SUPPLY CLASS
3110**AS28914**

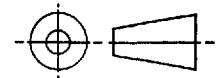
NOTICE

THIS DOCUMENT HAS BEEN TAKEN DIRECTLY FROM U.S. MILITARY SPECIFICATION MS28914D AND CONTAINS ONLY MINOR EDITORIAL AND FORMAT CHANGES REQUIRED TO BRING IT INTO CONFORMANCE WITH THE PUBLISHING REQUIREMENTS OF SAE TECHNICAL STANDARDS. THE INITIAL RELEASE OF THIS DOCUMENT IS INTENDED TO REPLACE MS28914D. ANY PART NUMBERS ESTABLISHED BY THE ORIGINAL SPECIFICATION REMAIN UNCHANGED.

THE ORIGINAL MILITARY SPECIFICATION WAS ADOPTED AS AN SAE STANDARD UNDER THE PROVISIONS OF THE SAE TECHNICAL STANDARDS BOARD (TSB) RULES AND REGULATIONS (TSB 001) PERTAINING TO ACCELERATED ADOPTION OF GOVERNMENT SPECIFICATIONS AND STANDARDS. TSB RULES PROVIDE FOR (A) THE PUBLICATION OF PORTIONS OF UNREVISED GOVERNMENT SPECIFICATIONS AND STANDARDS WITHOUT CONSENSUS VOTING AT THE SAE COMMITTEE LEVEL, AND (B) THE USE OF THE EXISTING GOVERNMENT SPECIFICATION OR STANDARD FORMAT.

UNDER DEPARTMENT OF DEFENSE POLICIES AND PROCEDURES, ANY QUALIFICATION REQUIREMENTS AND ASSOCIATED QUALIFIED PRODUCTS LISTS ARE MANDATORY FOR DOD CONTRACTS. ANY REQUIREMENT RELATING TO QUALIFIED PRODUCTS LISTS (QPL'S) HAS NOT BEEN ADOPTED BY SAE AND IS NOT PART OF THIS TECHNICAL REPORT.

THIRD ANGLE PROJECTION



PREPARED BY AIRFRAME CONTROL BEARINGS GROUP

SAE The Engineering Society
For Advancing Mobility
Land Sea Air and Space
INTERNATIONAL
400 Commonwealth Drive, Warrendale, PA 15096-0001

AEROSPACE STANDARD

BEARING, ROLLER, SELF-ALIGNING, DOUBLE ROW
AIRFRAME, ANTI-FRICTION, SEALED, TYPE III

AS28914
SHEET 1 OF 3

Copyright 1998 Society of Automotive Engineers, Inc.
All rights reserved.

Printed in the U.S.A.

QUESTIONS REGARDING THIS DOCUMENT: (724) 772-8510
TO PLACE A DOCUMENT ORDER: (724) 776-4970

FAX: (724) 776-0243
FAX: (724) 776-0790

SAE WEB ADDRESS:

<http://www.sae.org>

Distributed under license from the IHS Archive

SAE Technical Standards Board Rules provide that: "This report is published by SAE to advance the state of technical and engineering sciences. The use of this report is entirely voluntary, and its applicability and suitability for any particular use, including any patent infringement arising therefrom, is the sole responsibility of the user."

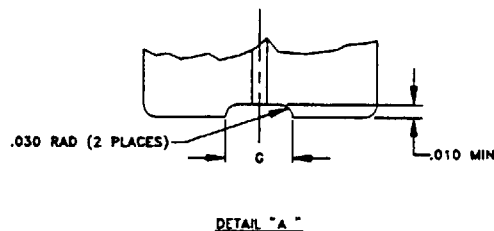
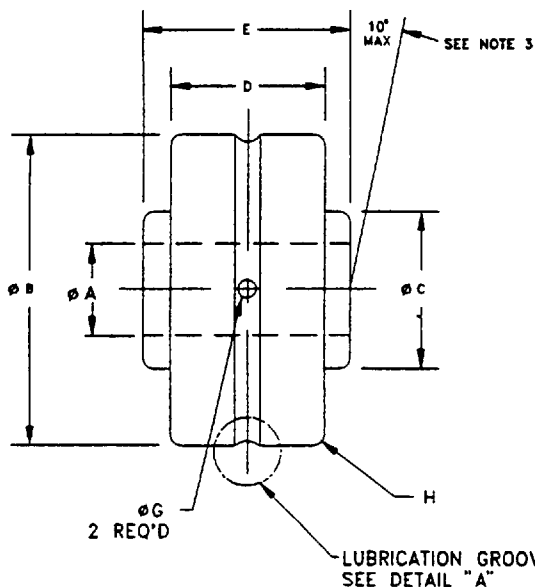
SAE reviews each technical report at least every five years at which time it may be reaffirmed, revised, or cancelled. SAE invites your written comments and suggestions.

SAENORM.COM : Click to view the full PDF of as28914

ISSUED 1998-06

AS28914

THE REQUIREMENTS FOR ACQUIRING THE PRODUCT(S) DESCRIBED HEREIN SHALL CONSIST OF THIS SPECIFICATION SHEET AND THE ISSUE OF THE FOLLOWING SPECIFICATION LISTED IN THAT ISSUE OF THE DODISS SPECIFIED IN THE SOLICITATION: MIL-B-8914.



MS DASH NO.	WT MAX LBS	STATIC LIMIT LOAD - LBS		DYNAMIC LOAD RATING - LBS	
		RADIAL	AXIAL	RADIAL	AXIAL
-4C	.21	6870	4250	5700	3525
-5C	.38	12300	7100	10200	5890
-6C	.36	19100	10400	15800	8600
-7C	.74	29000	14500	24000	12000
-8C	.74	38300	18600	31700	15395
-9C	1.15	59100	29500	49000	25150
-10C	1.14				
-12C	1.50				
-14C	2.28				

MS DASH NO.	ØA + .0000 (.000) - .0005 (.013) BORE	ØB + .0000 (.000) - .0005 (.013) O.D.	ØC + .005 (.127) - .005 (.127) DIA	RADIAL INTERNAL CLEARANCE	D + .000 (.000) - .005 (.127) WIDTH OUTER RING	E + .000 (.000) - .005 (.127) WIDTH INNER RING	F GROOVE WIDTH MIN	ØG LUBRICATION HOLE SIZE	H + .015 (.381) - .000 (.000)
	IN. (mm)	IN. (mm)	IN. (mm)	IN. (mm)	IN. (mm)	IN. (mm)	IN. (mm)	IN. (mm)	IN. (mm)
-4C	.2500 (6.350)	1.2500 (31.750)	.490 (12.450)		.750 (19.050)	1.000 (25.400)			
-5C	.3125 (7.938)	1.5625 (39.688)	.670 (17.020)	.0002(.005)	.844 (21.0)	1.187 (30.150)	.080 (2.032)	.060 (1.524)	
-6C	.3750 (9.525)			.0010(.025)					
-7C	.4375 (11.112)	2.0000 (50.800)	.920 (23.370)		1.000 (25.0)	1.500 (38.100)			
-8C	.5000 (12.700)								
-9C	.5625 (14.288)	2.3750 (60.325)	1.000 (25.400)	.0004(.010)	1.125 (28.580)	1.687 (42.850)	.110 (2.794)	.090(2.286)	.050(1.270)
-10C	.6250 (15.875)			.0012(.030)	1.250 (31.750)	1.875 (47.620)			
-12C	.7500 (19.050)	2.6250 (66.675)	1.230 (31.240)		1.250 (31.750)	1.875 (47.620)			
-14C	.8750 (22.225)	3.0000 (76.200)	1.350 (34.290)		1.500 (38.100)	2.000 (50.800)			

BEARING ROUNDNESS LIMITS									
BASIC (NOMINAL) DIAMETER		BORE ACCEPTANCE LIMITS				O.D. ACCEPTANCE LIMITS			
		MEAN DIAMETER				MEAN DIAMETER			
		d MIN	LOW	HIGH	d MAX	D MIN	LOW	HIGH	D MAX
.0000(.000)	2.0000(50.800)	-.0006(.015)	-.0005(.013)	+.0000(.000)	+.0001(.002)	-.0008(.020)	-.0005(.013)	+.0000(.000)	+.0003(.008)
2.0000(50.800)	4.0000(101.600)	-.0009(.023)	-.0007(.018)	+.0000(.000)	+.0002(.005)	-.0012(.030)	-.0007(.018)	+.0000(.000)	+.0005(.013)

1/ TOLERANCE ON -10C, -12C and -14C O.D., IS +.0000 (.000) TO -.0007 (.018)