

AS4971

RATIONALE

FEDERAL SUPPLY CLASS
4730

AS4971 HAS BEEN REAFFIRMED TO COMPLY WITH THE SAE FIVE-YEAR REVIEW POLICY.

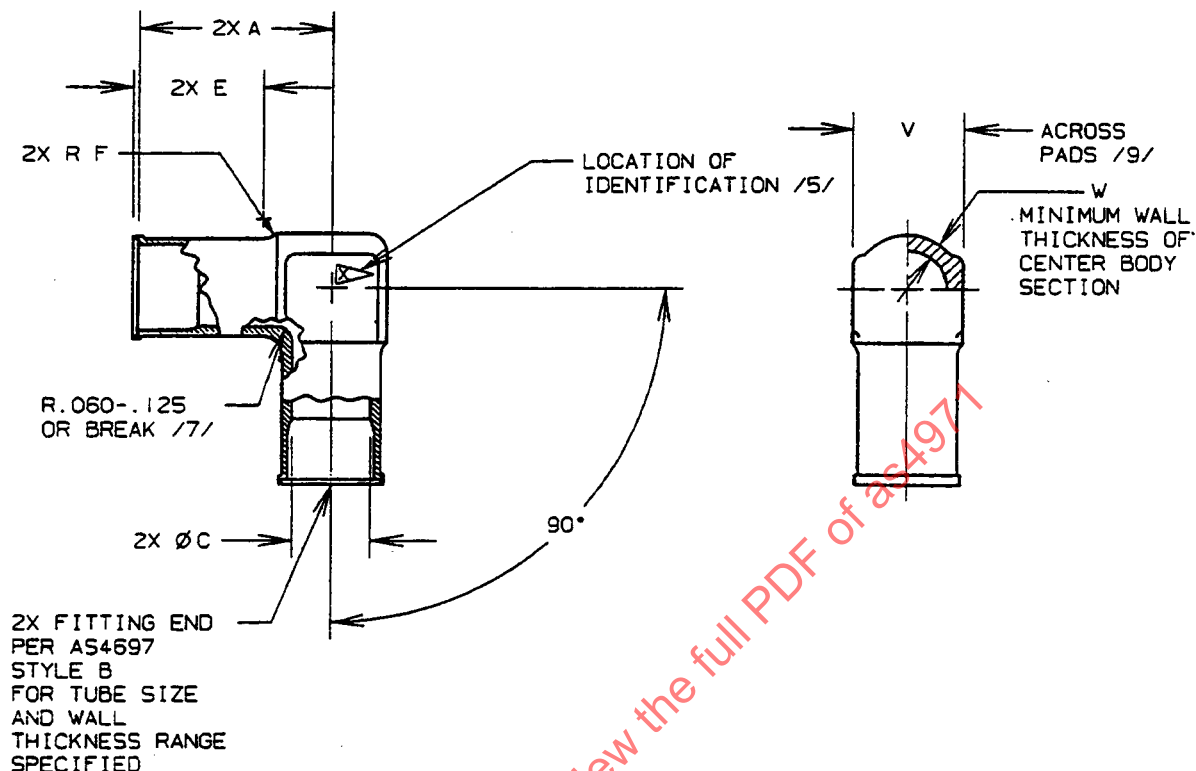


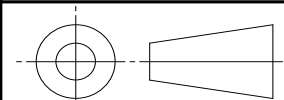
FIGURE 1 - FITTING, ELBOW, 90°

TABLE 1A - DIMENSIONS

BASIC NO. AS4971 /15/ SIZE AND TUBE WALL CODES	(RANGE OF NOMINAL TUBE WALLS) /6/ /15/	(NOMINAL TUBE SIZE)	A	C ±.005	E	F ±.015
04-022	.019-.022	.250	.906	.170	.650	.090
06-028	.023-.028	.375	.925	.283	.650	.090
06-032	.029-.032	.375	.925	.275	.650	.090
08-043	.033-.043	.500	.980	.378	.650	.090
10-055	.044-.055	.625	1.239	.479	.830	.125
12-055	.044-.055	.750	1.390	.604	.870	.125
12-065	.056-.065	.750	1.390	.584	.870	.125
16-078	.066-.078	1.000	1.640	.808	1.000	.125
16-089	.079-.089	1.000	1.640	.786	1.000	.125

SAE values your input. To provide feedback
on this Technical Report, please visit
<http://www.sae.org/technical/standards/AS4971>

THIRD ANGLE PROJECTION



CUSTODIAN: G-3/G-3B

PROCUREMENT SPECIFICATION: /4/ AS4510



AEROSPACE STANDARD

FITTING, ELBOW, 90°,
WELD RING

AS4971
SHEET 1 OF 2