

SAE Executive Standards Committee Rules provide that: "This report is published by SAE to advance the state of technical and engineering sciences. The use of this report is entirely voluntary, and its applicability and suitability for any particular use, including any patent infringement arising therefrom, is the sole responsibility of the user."

SAE reviews each technical report at least every five years at which time it may be revised, reaffirmed, stabilized, or cancelled. SAE invites your written comments and suggestions.

REV.
C

AS85049™/120

FEDERAL SUPPLY CLASS
5935

RATIONALE

REVISION IS REQUIRED TO CHANGE THE FIGURE 1 DRAIN HOLE REQUIREMENT TO A MINIMUM.

NOTICE

THE COMPLETE REQUIREMENTS FOR PROCURING THE PRODUCT DESCRIBED HEREIN SHALL CONSIST OF THIS DOCUMENT AND THE LATEST ISSUE OF AS85049.

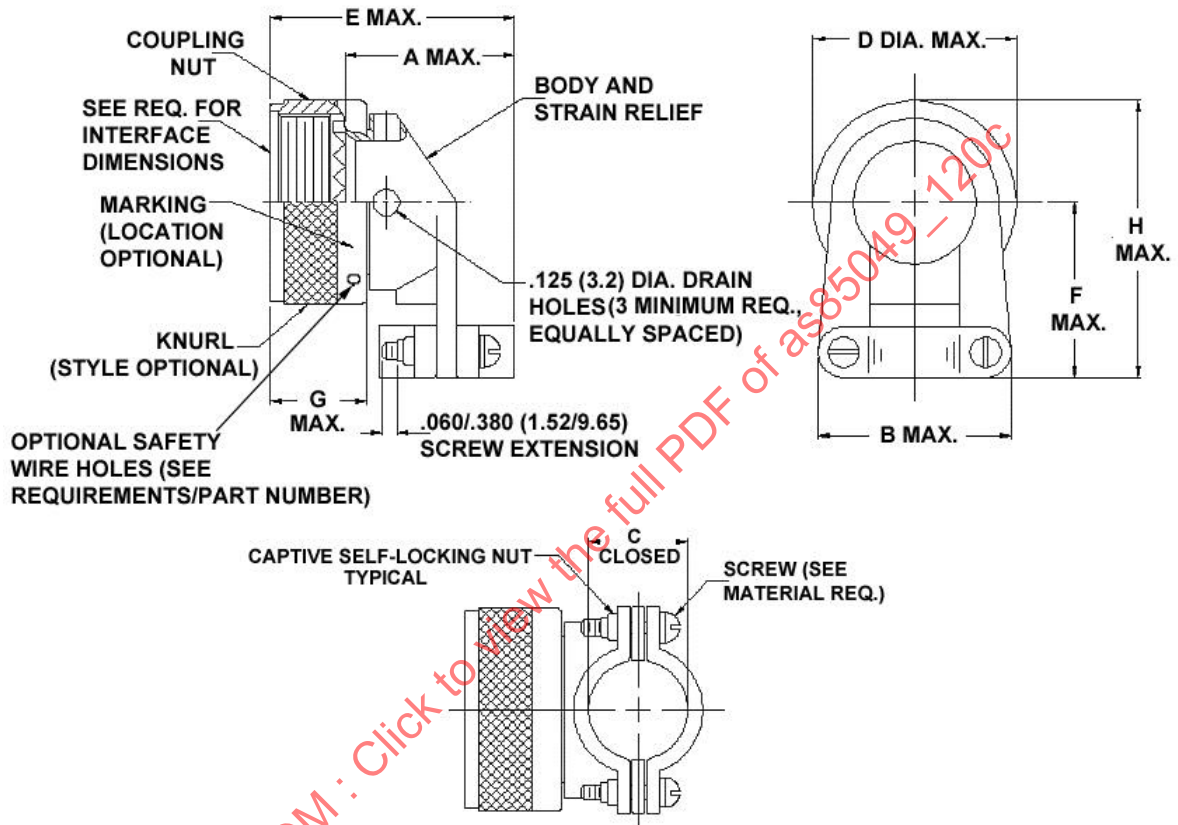
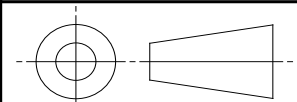


FIGURE 1 - ACCESSORY DIMENSIONS AND CONFIGURATION

For more information on this standard, visit

<https://www.sae.org/standards/content/AS85049/120C>

THIRD ANGLE PROJECTION



CUSTODIAN: AE-8/AE-8C1

PROCUREMENT SPECIFICATION: AS85049



AEROSPACE STANDARD

CONNECTOR ACCESSORIES, ELECTRICAL, STRAIN RELIEF,
90° SELF-LOCKING AND NON-SELF-LOCKING, CATEGORY 4B
(FOR AS50151 CRIMP, AS95234, MIL-DTL-26482 SERIES 2, AS81703
SERIES 3, AND MIL-DTL-83723 SERIES III CONNECTORS)

AS85049™/120
SHEET 1 OF 3

REV.
C

Copyright © 2021 SAE International

All rights reserved. No part of this publication may be reproduced, stored in a retrieval system or transmitted, in any form or by any means, electronic, mechanical, photocopying, recording, or otherwise, without the prior written permission of SAE.

TO PLACE A DOCUMENT ORDER: Tel: 877-606-7323 (inside USA and Canada)
Fax: 724-776-0790

Tel: +1 724-776-4970 (outside USA)
Email: CustomerService@sae.org

SAE WEB ADDRESS: <http://www.sae.org>

ISSUED 2005-04 REVISED 2017-05 REAFFIRMED 2021-12

TABLE 1 - DASH NUMBERS AND DIMENSIONS

DASH NO.	CONNECTOR SHELL SIZE				A MAX LENGTH 2/	B DIM MAX	C ±.031 DIM 1/	D MAX DIA	E MAX OVERALL LENGTH	F MAX	G MAX	H MAX	SCREW SIZE (REF)
	MIL-DTL- 83723 SERIES 3	AS50151 CRIMP, AS95234	AS81703 SERIES 3	MIL-DTL- 26482 SERIES 2									
-03	--	--	3	--	.93 (23.6)	.88 (22.4)	.219 (5.6)	.95 (24.1)	1.29 (32.8)	.84 (21.3)	.710 (18.03)	1.32 (33.5)	4-40
-08	8	8S	--	8	.93 (23.6)	.88 (22.4)	.219 (5.6)	.89 (22.6)	1.29 (32.8)	.81 (20.6)	.710 (18.03)	1.26 (32.0)	4-40
-10	10	10S,10SL	--	10	1.02 (25.9)	.94 (23.9)	.264 (6.7)	1.01 (25.7)	1.38 (35.1)	.87 (22.1)	.710 (18.03)	1.38 (35.1)	4-40
-12	12	12,12S	7	12	1.21 (30.7)	1.12 (28.4)	.344 (8.7)	1.14 (29.0)	1.57 (39.9)	.93 (23.6)	.710 (18.03)	1.50 (38.1)	4-40
-14	14	14,14S	12	14	1.27 (32.3)	1.19 (30.2)	.460 (11.7)	1.26 (32.0)	1.63 (41.4)	1.00 (25.4)	.710 (18.03)	1.63 (41.4)	4-40
-16	16	16,16S	19	16	1.42 (36.1)	1.44 (36.6)	.545 (13.8)	1.39 (35.3)	1.78 (45.2)	1.06 (26.9)	.710 (18.03)	1.75 (44.5)	4-40
-18	18	18	27	18	1.53 (38.9)	1.56 (39.6)	.615 (15.7)	1.51 (38.4)	1.89 (48.0)	1.23 (31.2)	.710 (18.03)	1.99 (50.6)	6-32
-20	20	20	37	20	1.65 (41.9)	1.69 (42.9)	.698 (17.7)	1.64 (41.7)	2.01 (51.1)	1.30 (33.0)	.710 (18.03)	2.07 (52.6)	6-32
-22	22	22	--	22	1.78 (45.2)	1.75 (44.5)	.780 (19.8)	1.76 (44.7)	2.14 (54.4)	1.36 (34.5)	.710 (18.03)	2.25 (57.2)	6-32
-24	24	24	--	24	1.90 (48.3)	1.88 (47.8)	.850 (21.6)	1.89 (48.0)	2.26 (57.4)	1.42 (36.1)	.710 (18.03)	2.37 (60.2)	8-32
-28	--	28	--	--	2.20 (55.9)	2.12 (53.8)	.950 (24.1)	2.14 (54.4)	2.72 (69.1)	1.63 (41.4)	.890 (22.6)	2.70 (68.6)	8-32
-32	--	32	--	--	2.27 (57.7)	2.50 (63.5)	1.015 (25.8)	2.40 (61.0)	2.79 (70.9)	1.86 (47.2)	.890 (22.6)	3.05 (77.5)	8-32
-36	--	36	--	--	2.39 (60.7)	2.62 (66.5)	1.187 (30.1)	2.64 (67.1)	2.91 (73.9)	1.98 (50.3)	.890 (22.6)	3.30 (83.8)	8-32
-40	--	40	--	--	2.52 (64.0)	2.68 (68.1)	1.220 (31.0)	2.89 (73.4)	3.04 (77.2)	2.10 (53.3)	.890 (22.6)	3.55 (90.2)	8-32
-44	--	44	--	--	2.77 (70.4)	3.00 (76.2)	1.500 (38.1)	3.14 (79.8)	3.29 (83.6)	2.36 (59.9)	.890 (22.6)	3.93 (99.8)	8-32
-48	--	48	--	--	2.89 (73.4)	3.50 (88.9)	1.625 (41.3)	3.39 (86.1)	3.41 (86.6)	2.48 (63.0)	.890 (22.6)	4.18 (106.2)	8-32
-61	--	--	61	--	1.90 (48.3)	1.88 (47.8)	.850 (21.6)	1.95 (49.5)	2.26 (57.4)	1.45 (36.8)	.710 (18.03)	2.43 (61.7)	8-32

1/ CABLE ENTRY IS MEASURED WITH SADDLE BARS CLOSED AND BOTTOMED ON CLAMP BARS.

2/ THE "A" DIMENSION IS MEASURED FROM THE BOTTOM OF THE ACCESSORY TEETH TO THE END OF THE STRAIN RELIEF.

REQUIREMENTS: ALL REQUIREMENTS SHALL CONSIST OF THIS DOCUMENT AND THE LATEST ISSUE OF AS85049.

1. DESIGN AND CONSTRUCTION:

ACCESSORIES SHALL BE DESIGNED IN ACCORDANCE WITH FIGURE 1 AND TABLE 1. DIMENSIONS ARE IN INCHES AND APPLY AFTER PLATING. UNLESS OTHERWISE SPECIFIED, TOLERANCES SHALL BE: .XX = ±.03 AND .XXX = ±.015 ANGULAR TOLERANCES X = ±2. METRIC EQUIVALENTS ARE IN PARENTHESES, ARE GIVEN FOR GENERAL INFORMATION ONLY, AND ARE BASED UPON 1 INCH = 25.4 MM.

INTERFACE DIMENSIONS: IN ACCORDANCE WITH AS85049, FIGURE 4 OR 4A.

ACCESSORY: CONSISTS OF A COUPLING NUT, BODY, AND STRAIN RELIEF. THE COUPLING NUT SHALL BE CAPTIVATED TO AND FREE TO ROTATE ON THE BODY.

FOR THE NON-SELF-LOCKING COUPLING NUT CONFIGURATION (DASH "-"), THREE (3) EQUALLY SPACED HOLES SHALL BE PROVIDED WITH OPTION "H" AND SHALL ACCOMMODATE .020 MAXIMUM SAFETY WIRE.

2. STRAIN RELIEF ACCOMMODATES AS85049/127 BUSHING STRIP.

3. DETENTED SELF-LOCKING PROVIDES A POSITIVE AUDIBLE DETENTED COUPLING. OPTION "N" IS A FREE SPINNING SELF-LOCKING COUPLING.

4. CLAMPS SHALL HAVE NO PROTRUSIONS OR SHARP EDGES WHICH MAY PINCH CABLE.

	AEROSPACE STANDARD	AS85049™/120 SHEET 2 OF 3	REV. C
	CONNECTOR ACCESSORIES, ELECTRICAL, STRAIN RELIEF, 90° SELF-LOCKING AND NON-SELF-LOCKING, CATEGORY 4B (FOR AS50151 CRIMP, AS95234, MIL-DTL-26482 SERIES 2, AS81703 SERIES 3, AND MIL-DTL-83723 SERIES III CONNECTORS)		