

SAE Technical Standards Board Rules provide that: "This report is published by SAE to advance the state of technical and engineering sciences. The use of this report is entirely voluntary, and its applicability and suitability for any particular use, including any patent infringement arising therefrom, is the sole responsibility of the user."

SAE reviews each technical report at least every five years at which time it may be reaffirmed, revised, or cancelled. SAE invites your written comments and suggestions.

AS9697

Submitted for recognition as an American National Standard

FEDERAL SUPPLY CLASS
5306

NOTICE

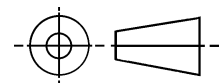
THIS DOCUMENT HAS BEEN TAKEN DIRECTLY FROM U.S. MILITARY SPECIFICATION MS9697A, NOTICE 1 AND CONTAINS ONLY MINOR EDITORIAL AND FORMAT CHANGES REQUIRED TO BRING IT INTO CONFORMANCE WITH THE PUBLISHING REQUIREMENTS OF SAE TECHNICAL STANDARDS. THE INITIAL RELEASE OF THIS DOCUMENT IS INTENDED TO REPLACE MS9697A, NOTICE 1. ANY PART NUMBERS ESTABLISHED BY THE ORIGINAL SPECIFICATION REMAIN UNCHANGED.

THE ORIGINAL MILITARY SPECIFICATION WAS ADOPTED AS AN SAE STANDARD UNDER THE PROVISIONS OF THE SAE TECHNICAL STANDARDS BOARD (TSB) RULES AND REGULATIONS (TSB 001) PERTAINING TO ACCELERATED ADOPTION OF GOVERNMENT SPECIFICATIONS AND STANDARDS. TSB RULES PROVIDE FOR (A) THE PUBLICATION OF PORTIONS OF UNREVISED GOVERNMENT SPECIFICATIONS AND STANDARDS WITHOUT CONSENSUS VOTING AT THE SAE COMMITTEE LEVEL, AND (B) THE USE OF THE EXISTING GOVERNMENT SPECIFICATION OR STANDARD FORMAT.

UNDER DEPARTMENT OF DEFENSE POLICIES AND PROCEDURES, ANY QUALIFICATION REQUIREMENTS AND ASSOCIATED QUALIFIED PRODUCTS LISTS ARE MANDATORY FOR DOD CONTRACTS. ANY REQUIREMENT RELATING TO QUALIFIED PRODUCTS LISTS (QPL'S) HAS NOT BEEN ADOPTED BY SAE AND IS NOT PART OF THIS TECHNICAL REPORT.

SAENORM.COM : Click to view the full PDF of as9697

THIRD ANGLE PROJECTION



ISSUED 1998-11

PREPARED BY COMMITTEE E-25

PROCUREMENT SPECIFICATION: AMS 7471

SAE The Engineering Society
For Advancing Mobility
Land Sea Air and Space®
INTERNATIONAL
400 Commonwealth Drive, Warrendale, PA 15096-0001

AEROSPACE STANDARD

BOLT, MACHINE - DOUBLE HEXAGON, EXTENDED
WASHER HEAD, CORROSION AND HEAT RESISTANT
STEEL, .250-28 UNJF-3A

AS9697
SHEET 1 OF 3

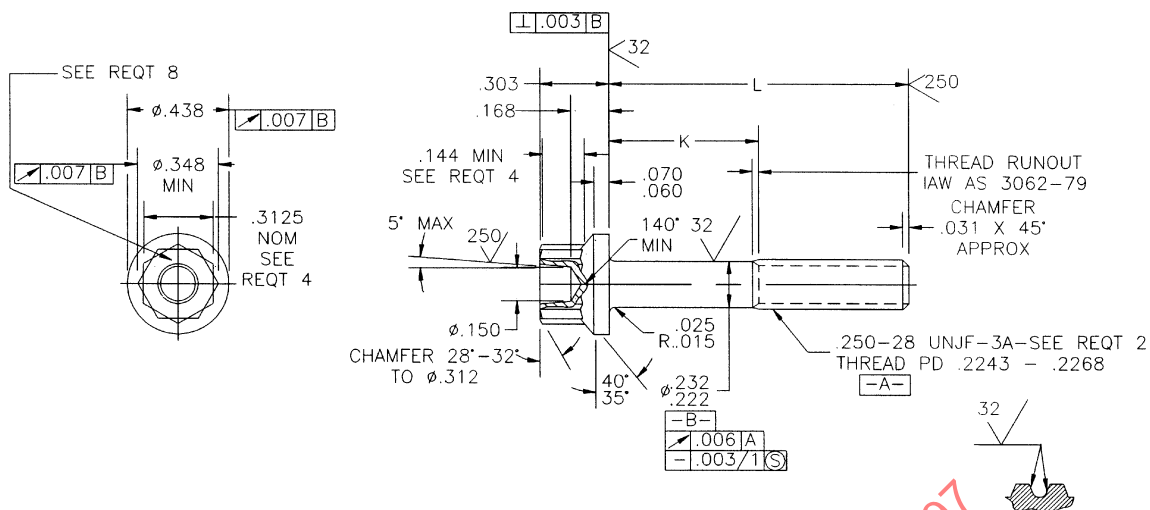
Copyright 1998 Society of Automotive Engineers, Inc.
All rights reserved.

Printed in the U.S.A.

QUESTIONS REGARDING THIS DOCUMENT: (724) 772-8510
TO PLACE A DOCUMENT ORDER: (724) 776-6070

FAX: (724) 776-0243
FAX: (724) 776-6700

SAE WEB ADDRESS: <http://www.sae.org>



SECTION THRU THREAD PROFILE

TABLE 1. DASH NUMBERS AND DIMENSIONS

DASH NO.	L	K	APPROX WEIGHT LB/100	DASH NO.	L	K	APPROX WEIGHT LB/100	DASH NO.	L	K	APPROX WEIGHT LB/100
-04	.375	.079-.099	1.06	-25	1.688	.878-.938	2.88	-46	4.125	3.315-3.375	5.75
-05	.438	.079-.099	1.33	-26	1.750	.940-1.000	2.91	-47	4.250	3.440-3.500	5.90
-06	.500	.079-.099	1.41	-27	1.812	1.002-1.062	2.98	-48	4.375	3.565-3.625	6.05
-07	.562	.079-.099	1.48	-28	1.875	1.065-1.125	3.06	-49	4.500	3.690-3.750	6.20
-08	.625	.079-.099	1.56	-29	2.000	1.190-1.250	3.21	-50	4.625	3.815-3.875	6.35
-09	.688	.079-.099	1.63	-30	2.125	1.315-1.375	3.36	-51	4.750	3.940-4.000	6.50
-10	.750	.079-.099	1.71	-31	2.250	1.440-1.500	3.51	-52	4.875	4.065-4.125	6.65
-11	.812	.079-.099	1.78	-32	2.375	1.565-1.625	3.66	-53	5.000	4.190-4.250	6.80
-12	.875	.079-.125	1.86	-33	2.500	1.690-1.750	3.81	-54	5.125	4.315-4.375	6.95
-13	.938	.128-.188	1.93	-34	2.625	1.815-1.875	3.96	-55	5.250	4.440-4.500	7.10
-14	1.000	.190-.250	2.01	-35	2.750	1.940-2.000	4.11	-56	5.375	4.565-4.625	7.25
-15	1.062	.252-.312	2.08	-36	2.875	2.065-2.125	4.26	-57	5.500	4.690-4.750	7.40
-16	1.125	.315-.375	2.16	-37	3.000	2.190-2.250	4.41	-58	5.625	4.815-4.875	7.55
-17	1.188	.378-.438	2.23	-38	3.125	2.315-2.375	4.56	-59	5.750	4.940-5.000	7.70
-18	1.250	.440-.500	2.31	-39	3.250	2.440-2.500	4.71	-60	5.875	5.065-5.125	7.85
-19	1.312	.502-.562	2.38	-40	3.375	2.565-2.625	4.86	-61	6.000	5.190-5.250	8.00
-20	1.375	.565-.625	2.46	-41	3.500	2.690-2.750	5.00				
-21	1.438	.628-.688	2.53	-42	3.625	2.815-2.875	5.15				
-22	1.500	.690-.750	2.61	-43	3.750	2.940-3.000	5.30				
-23	1.562	.752-.812	2.68	-44	3.875	3.065-3.125	5.45				
-24	1.625	.815-.875	2.76	-45	4.000	3.190-3.250	5.60				