

**Connection and Accessory  
Locations for Towing Doubles Trailers  
and Multi-Axle Trailers  
-SAE J849b**

SAE Recommended Practice  
Revised January 1970

THIS IS A PREPRINT WHICH IS  
SUBJECT TO REVISIONS AND  
CORRECTIONS. THE FINAL  
VERSION WILL APPEAR IN THE  
1983 EDITION OF THE SAE  
HANDBOOK.

**SAE** *The Engineering  
Resource For  
Advancing Mobility*

**PREPRINT**

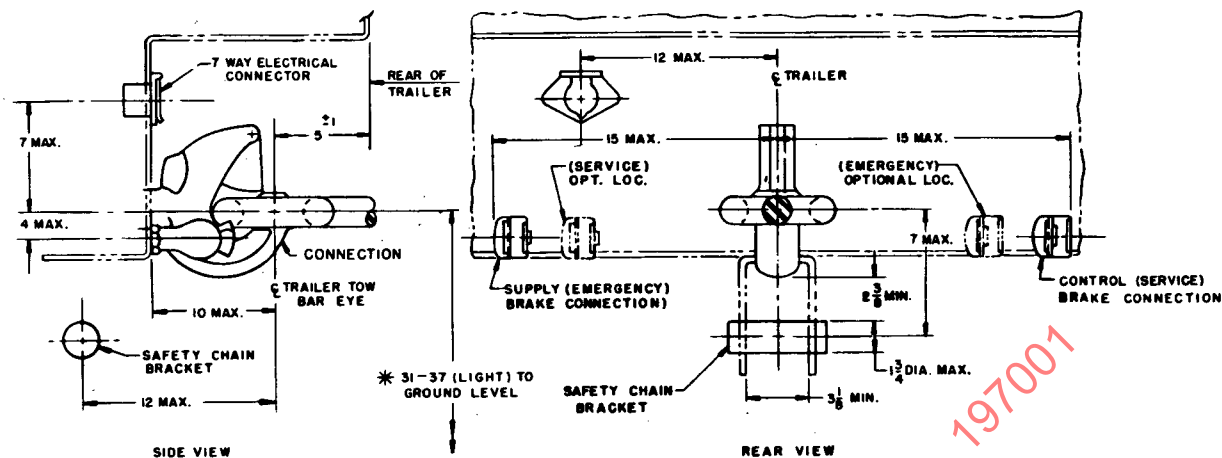
**S. A. E.  
LIBRARY**

SAENORM.COM : Click to view the full PDF of j849b\_197001

# CONNECTION AND ACCESSORY LOCATIONS FOR TOWING DOUBLES TRAILERS AND MULTI-AXLE TRAILERS—SAE J849b

## SAE Recommended Practice

Report of Transportation and Maintenance and Truck and Bus Technical Committees approved June 1963 and last revised January 1970.

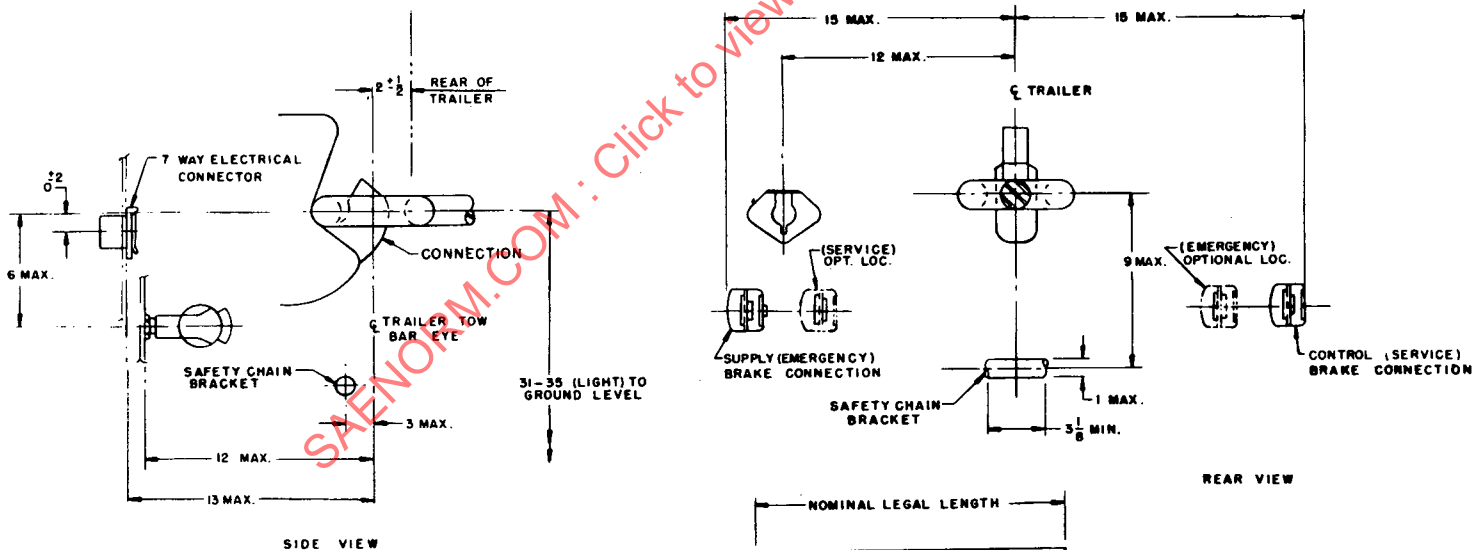
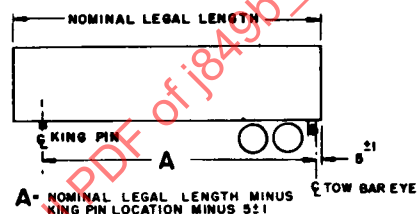


\* FOR TRUCK INSTALLATION, THIS DIMENSION TO BE 27-33.

This SAE Recommended Practice applies to all commercial trailers exceeding 40,000 lb gvw, except drop frame types.

Connection and mounting structure must withstand a tow bar pull equivalent to 115% of the gvw of the towed trailer without residual deformation to mounting or trailer structure.

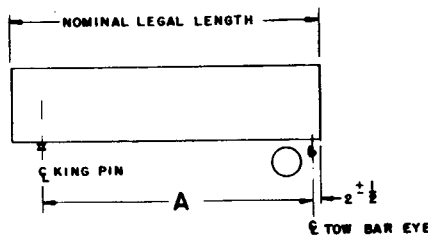
NOTE: All dimensions given in inches.

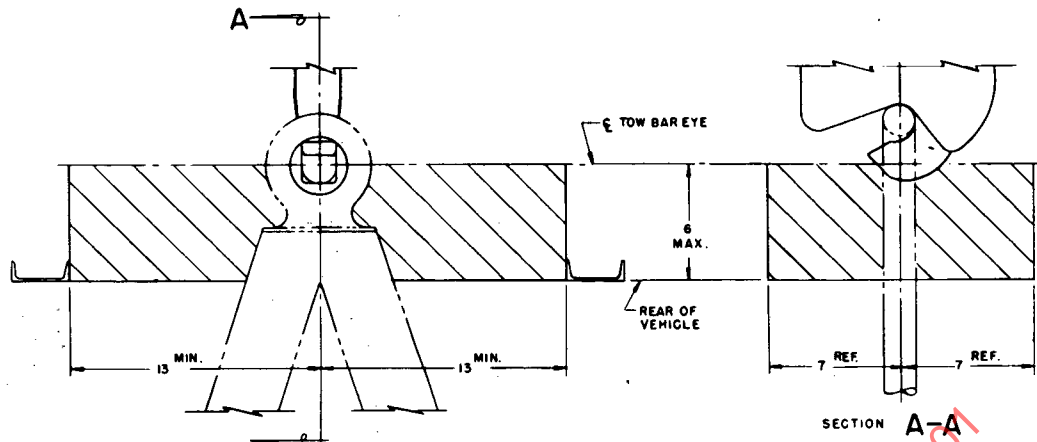


This SAE Recommended Practice applies to all commercial single axle doubles trailers to a maximum gvw of 40,000 lb, except drop frame and car haul types.

Connection and mounting structure must withstand a tow bar pull equivalent to 115% of the gvw of the towed trailer without residual deformation to mounting or trailer structure.

NOTE: All dimensions given in inches.





Clearance space shown must extend 7 in. above and 7 in. below the horizontal centerline of the drawbar eye as shown in Section A-A.

NOTE: All dimensions given in inches.

SAENORM.COM : Click to view the full PDF of j849b\_197001